

# 21<sup>st</sup> Annual Central States Forest-Soils Workshop

**October 9-11, 2001**  
**Matteson, Illinois**  
*(just southeast of Chicago and  
approximately 20 miles east of Joliet)*



## Program Highlights

- Tuesday, October 9**
- Introduction and overview by John "Doc" Ebinger
  - Preview of field trips by Fran Harty, IDNR-Heritage, and Pat Thrasher, USFS-Midewin.
- Wednesday, October 10**
- Momence Wetlands
  - Iroquois State Fish and Wildlife Area
  - Dinner and Auction/Raffle featuring Dudley Dirtdauber
- Thursday, October 11**
- Midewin National Tallgrass Prairie

## Sponsors

U.S. Department of Agriculture  
Natural Resources Conservation Service  
Forest Service

Illinois Department of Natural Resources  
Division of Forest Resources  
Division of Natural Heritage

Soil and Water Conservation Districts for Will-  
South Cook, Iroquois, and Kankakee Counties

Illinois Soil Classifiers Association

## Contacts

For more information contact Tom Ward, 217/353-6647  
Tom.Ward@il.usda.gov or Bob McLeese, 217/353-6643  
Bob.Mcleese@il.usda.gov, 1902 Fox Drive, Champaign, IL 61820.



# Field Trip Destinations

## ***Wednesday, October 10 - Momence wetlands***

At 2,500 acres, this is the last natural vestige of the presettlement, million-acre Kankakee Grand Marsh that extended from South Bend, IN to Momence, IL. This stop will feature black oak sand forests and floodplain forests comprised of pin oak, river birch, and swamp white oak. Special features include the northernmost location for pumpkin ash, swamp cottonwood, American snowbell, and climbing hempweed in Illinois. Featured soils will be the Chelsea and Gilford series. This area provides habitat for six state-listed species and also supports a population of the red squirrel once thought to be extirpated from Illinois.

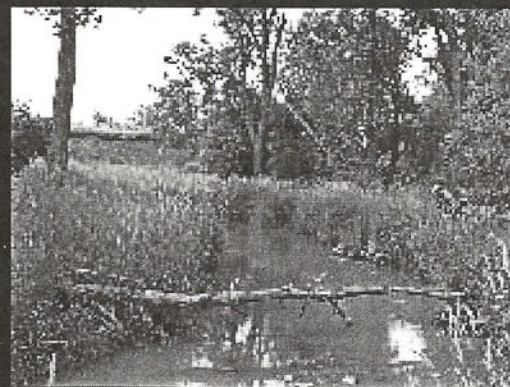


## ***Wednesday, October 10 - Iroquois State Fish and Wildlife Area***

At four square miles in size, this is one of the finest and most expansive complexes of high quality sedge meadow, wet sand prairie, black oak sand savanna, and pin oak flatwoods extant in Illinois. There are ten biotic communities and 15 state-listed species recognized at this site. Unusual species that find habitat here include scarlet oak, blackgum, fame flower, sun dew, lupine, pocket gophers, red squirrel, Regal fritillary, and Indiana skipper. This area is considered to be among the top six most important areas in Illinois for invertebrates associated with prairies and sedge meadows. Soils include the Oakville, Watseka, Granby, and Morocco series.

## ***Thursday, October 11 - Midewin National Tallgrass Prairie***

Established on February 10, 1996, Midewin is America's first National Tallgrass Prairie, and at over 30 square miles, it is also the largest prairie restoration ever attempted. Special features include 16 state-listed species and 108 breeding birds, including the state's largest population of upland sandpipers. Midewin contains dolomite prairies, wetlands, and oak-hickory woodlands. We will visit Grant Creek and Starr Grove, a presettlement oak grove on Prairie Creek. At Grant Creek we will see the effects of channel relocation through a prairie soil (Drummer) and discuss the processes of soil formation in riparian environments, natural and potential riparian vegetation, and options for riparian management. At Starr Grove the featured soil will be the Ozaukee series (formerly Morely), an isolated island of wooded Alfisols surrounded by the Elliot series, a prairie Mollisol.



**A detailed Agenda and Registration Form  
will be mailed in August, 2001.**



21<sup>st</sup> Annual  
Central States Forest-Soils Workshop  
Registration

October 9-11, 2001

Matteson, Illinois

(just southeast of Chicago  
and approximately 20 miles  
east of Joliet)

**Registration**  
(includes Field Trip  
transportation, Wednesday  
Lunch and Dinner)

Send Registration to

Sponsors

Name: \_\_\_\_\_

(Name on Badge)

Spouse: \_\_\_\_\_

(Name on Badge)

Address: \_\_\_\_\_

City: \_\_\_\_\_ State: \_\_\_\_\_ Zip Code: \_\_\_\_\_

Phone: \_\_\_\_\_ Email: \_\_\_\_\_

Representing: \_\_\_\_\_

Pre-registration (before 9/21) @ \$55.00 X (number) \_\_\_\_\_ = \$ \_\_\_\_\_

After September 21, 2001 @ \$70.00 X (number) \_\_\_\_\_ = \$ \_\_\_\_\_

Need a Receipt? YES NO

*Payment must be enclosed to receive pre-registration discount, make  
checks payable to Illinois Soil Classifiers Association.*

Illinois Soil Classifiers Association  
C/O Jean McConkey  
USDA-NRCS  
1902 Fox Drive  
Champaign, IL 61820

U.S. Department of Agriculture  
Natural Resources Conservation Service  
Forest Service

Illinois Department of Natural Resources  
Division of Forest Resources  
Division of Natural Heritage

Soil and Water Conservation Districts for  
Will-South Cook, Iroquois, and Kankakee Counties  
Illinois Soil Classifiers Association

*For more information call Tom Ward at 217/353-6647  
or Bob McLeese at 217/353-6643.*



# Lodging

## Holiday Inn-Matteson

--Workshop Location--

(ask for special rate of \$89 + tax,  
Fed. p/d for Cook Co. lodging = \$130)

500 Holiday Plaza Drive

(Intersection of I-57 and  
IL Route 30, exit 340)

Matteson, IL 60443

708/747-3500



## Other Nearby Choices

Baymont Inns  
5210 Southwick Dr.  
Matteson, IL 60443  
708/503-0999

Country Inn & Suites  
950 Lake Superior St.  
Matteson, IL 60443  
708/748-4740

Covert Motel, Inc.  
21609 Crawford Ave.  
Matteson, IL 60443  
708/748-8000

Hampton Inn  
5200 Lincoln Hwy  
Matteson, IL 60443  
708/481-3900

Campgrounds within 15 miles:  
A-OK Campground, Frankfort, 708/479-5626  
Windy City Beach & Camping, Tinley Park, 708/720-0030  
Emerald Trails, Crete, 708/672-8700  
Enchanted Shores of Killarney, Peotone, 708/258-6040  
Martin Campground, Joliet, 815/726-3173

## Summary Agenda

### Tuesday, October 9, 2001

**Registration:** 5-7 PM, Matteson Holiday Inn

**Presentations:** 7-9 PM, Overview of soils, geology, and vegetation by John "Doc" Ebinger, preview of field trips by Fran Harty IDNR-Heritage and Pat Thrasher, USFS-Midewin.

### Wednesday, October 10, 2001

**Registration:** 7-8 AM, Matteson Holiday Inn

**Field trip:** 8 AM- 4:30 PM, (departing from and returning to Holiday Inn), Momence Wetlands, E Kankakee Co. and Iroquois State Fish & Wildlife Area, NE Iroquois Co.

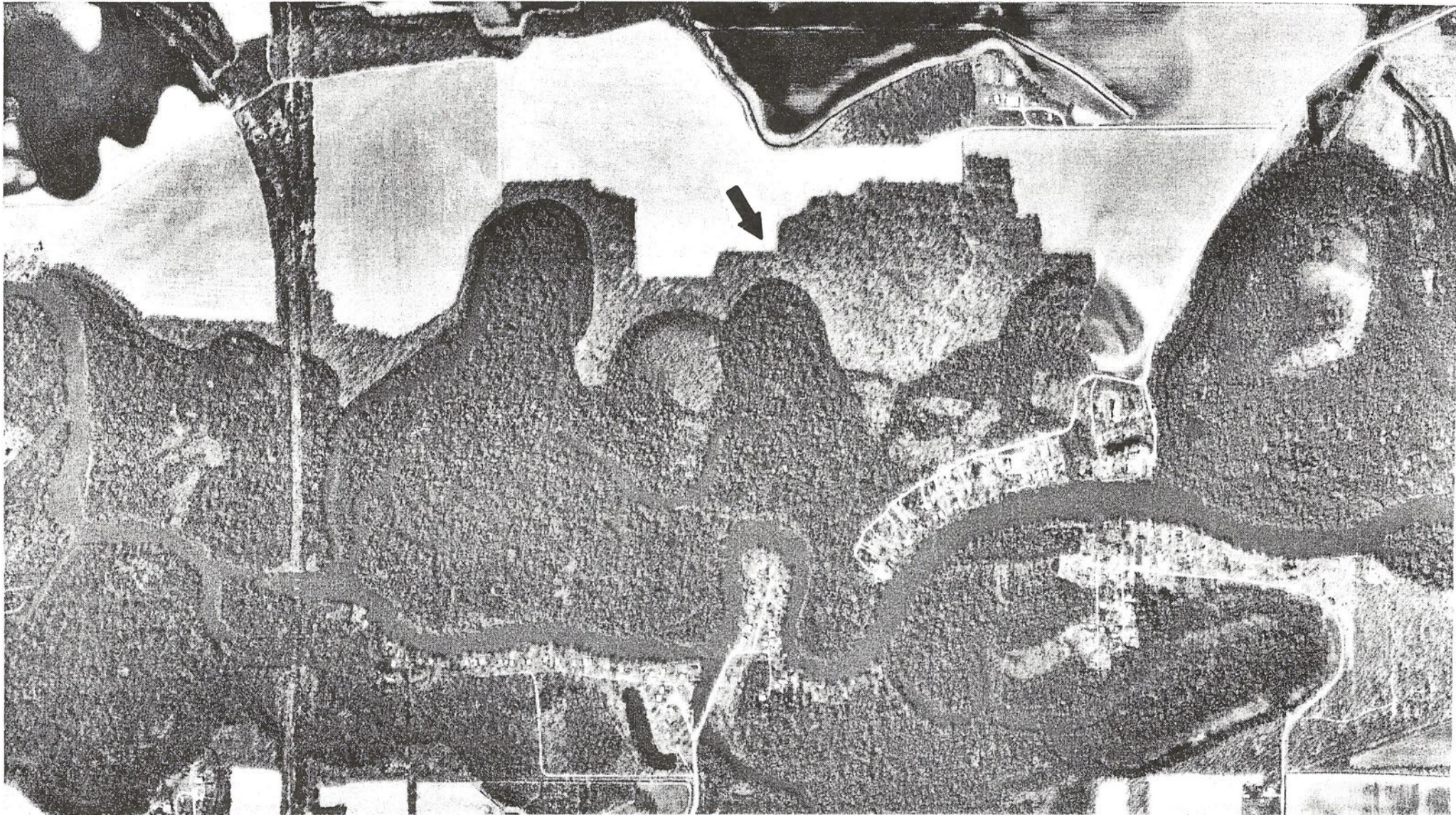
**Evening Program:** 6 PM Cash bar, 6:30 Dinner, 7:30-9 Auction/Raffle featuring Dudley Dirtdauber.

### Thursday, October 11, 2001

**Field Trip:** 8 AM-Noon, (departing from and returning to Holiday Inn), Midewin National TallGrass Prairie, Wilmington IL (Grant Creek and Starr Grove)



# Momence Wetlands Land and Water Reserve

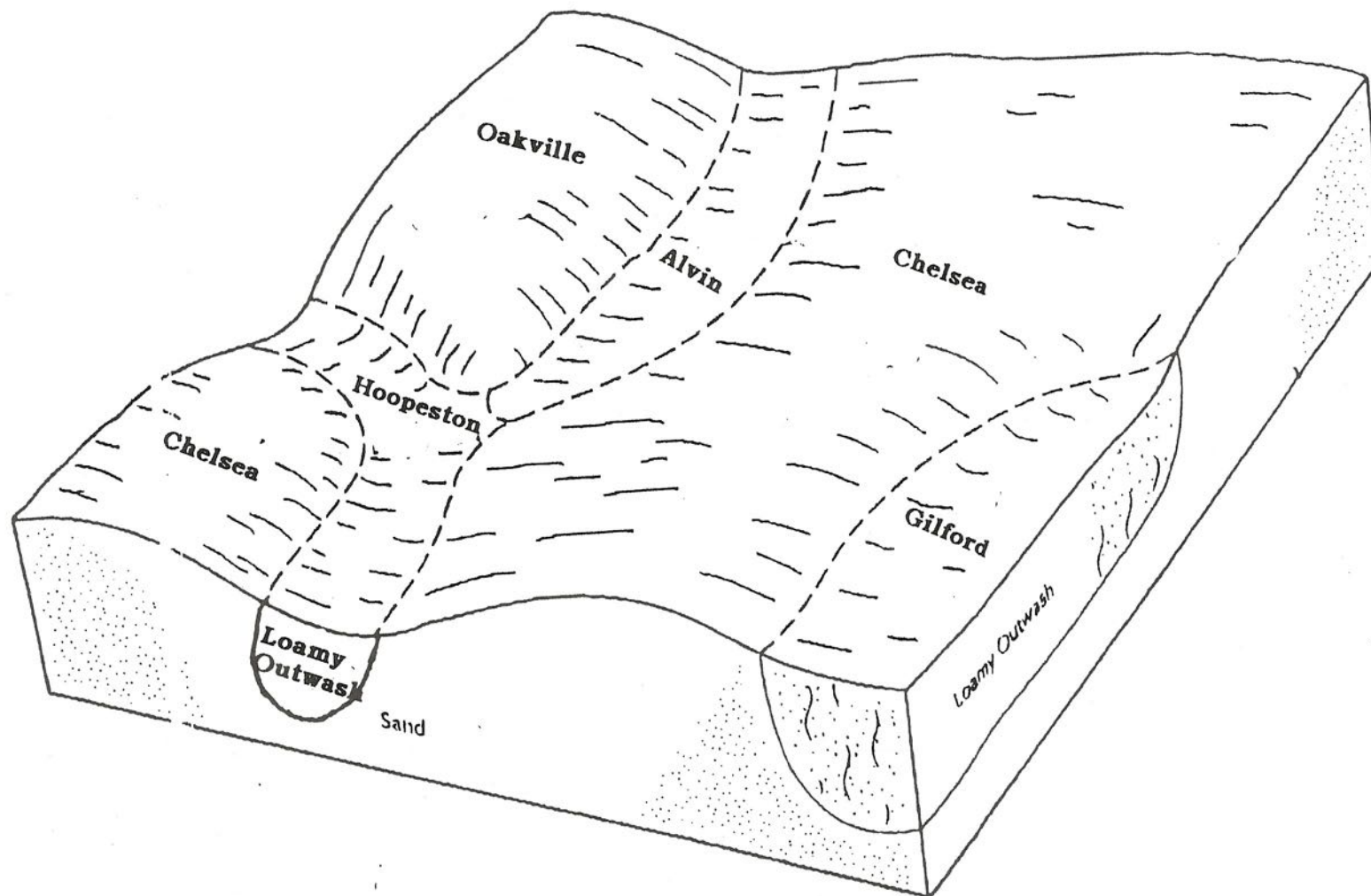


Scale 1:11280

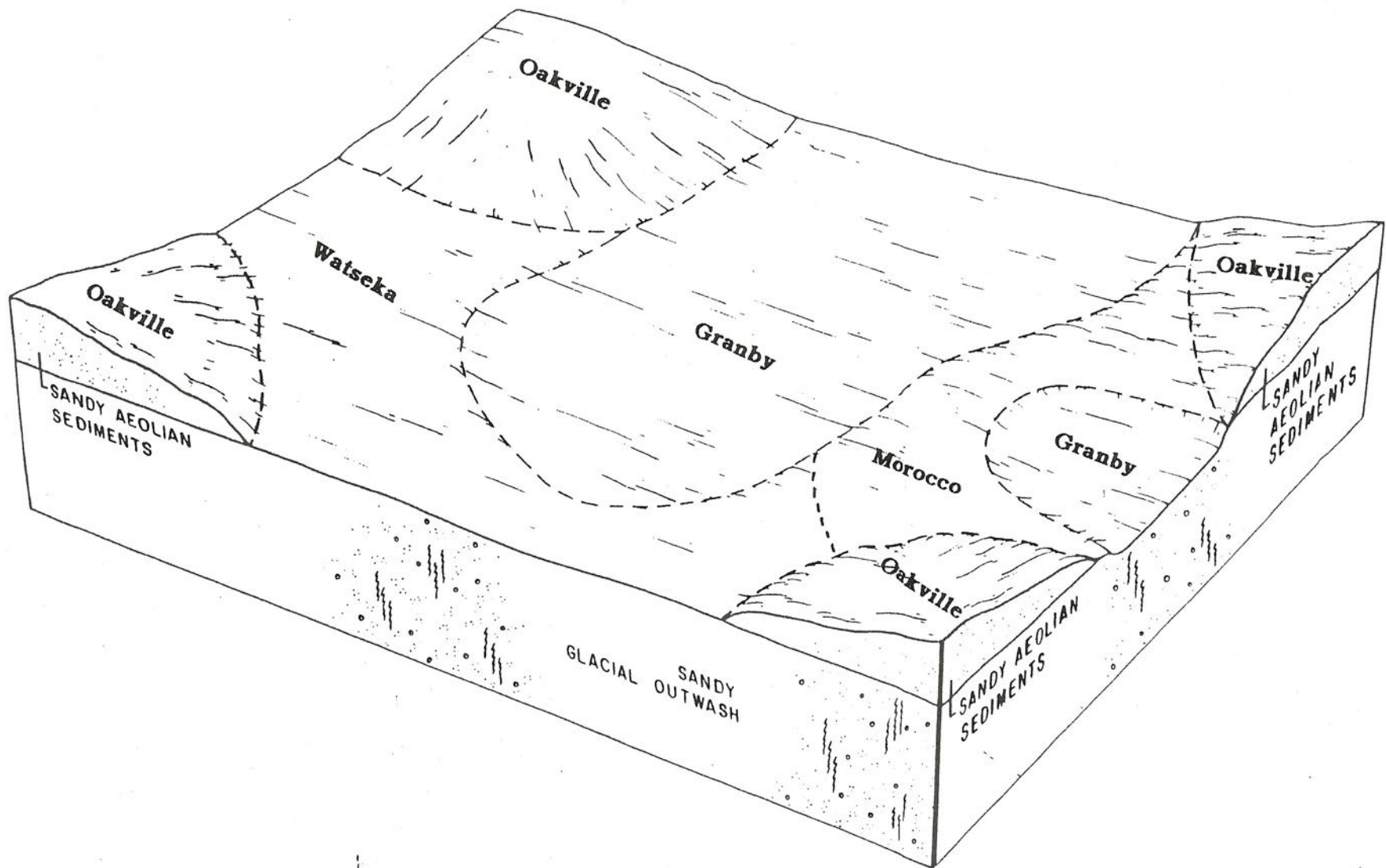




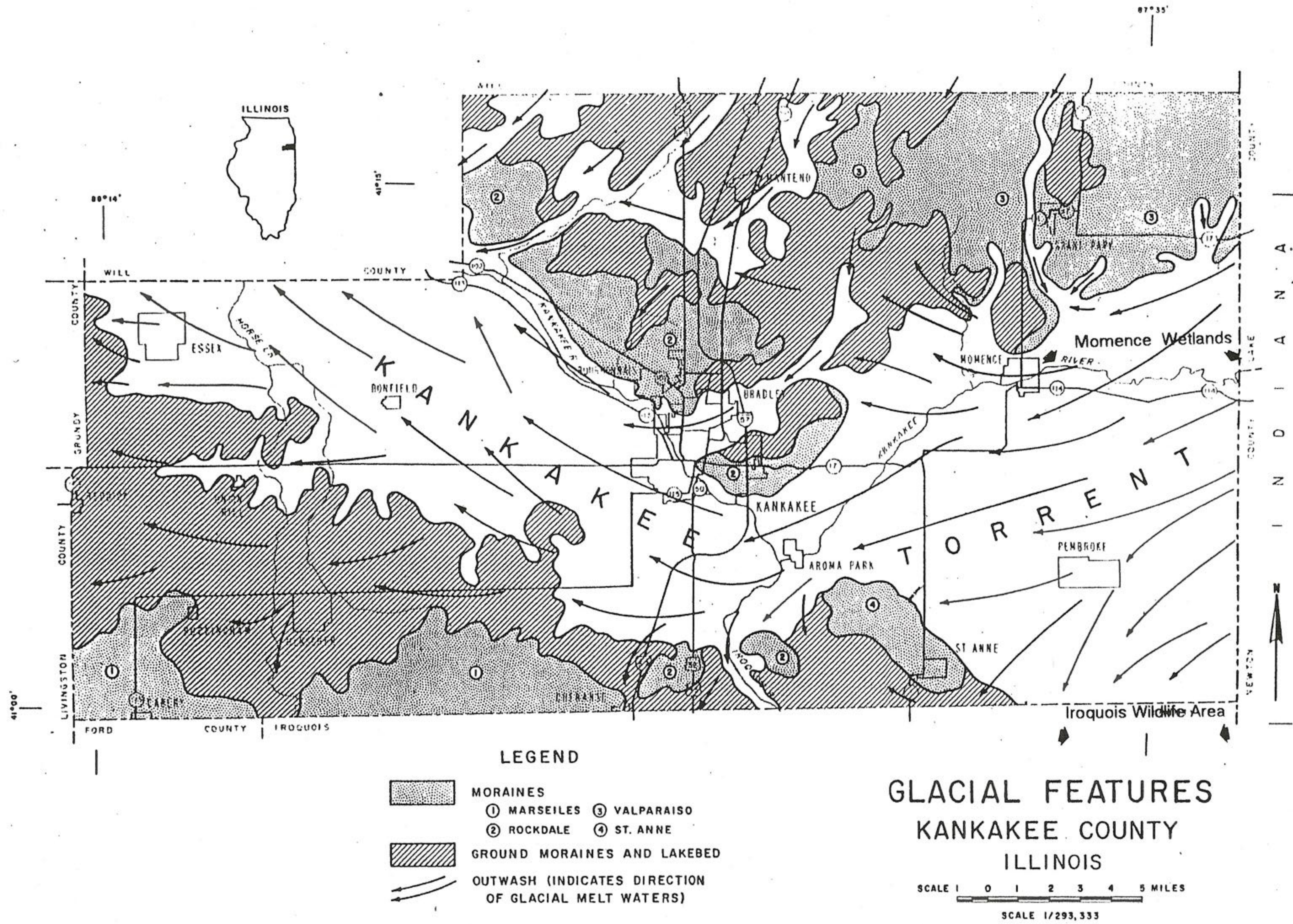
# MOMENCE WETLANDS---SOIL BLOCK DIAGRAM



# IROQUOIS STATE WILDLIFE AREA--SOIL BLOCK DIAGRAM

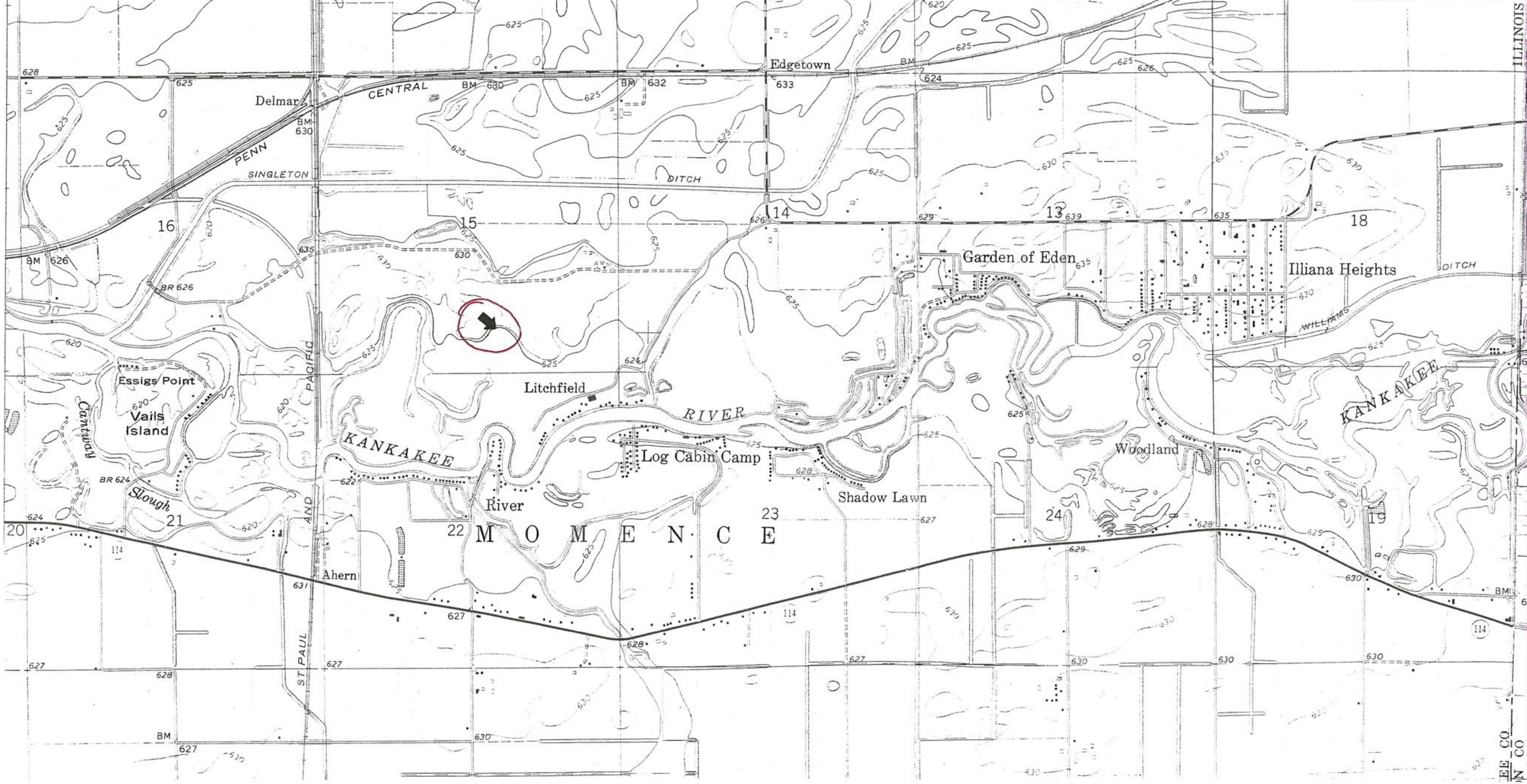






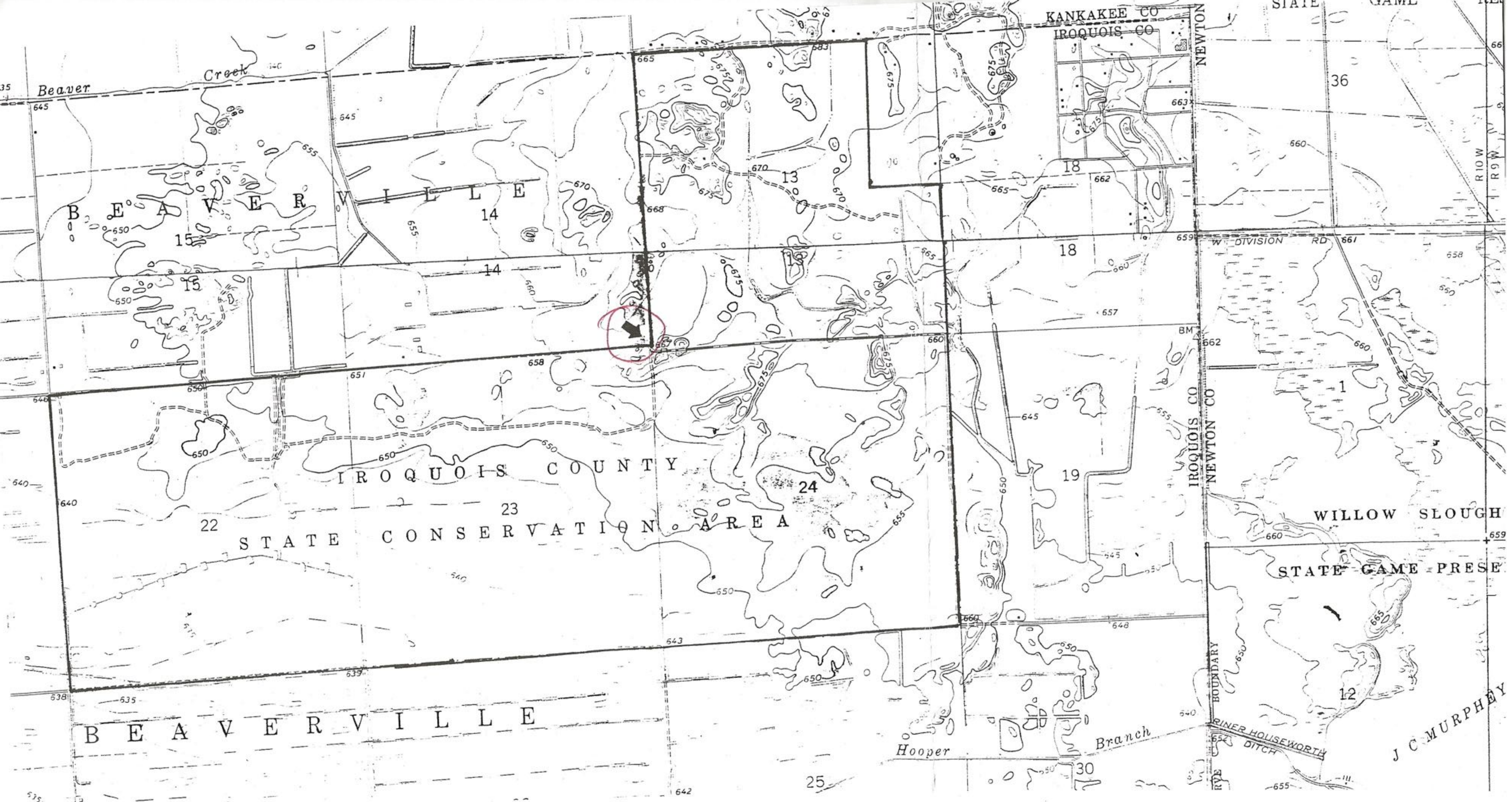
**Figure 1** —Glacial features of Kankakee County, Illinois.





MOMENCE WETLANDS--ILLIANA HEIGHTS 7.5 TOPOGRAPHIC MAP





**IROQUOIS STATE WILDLIFE AREA -- LEESVILLE AND DONOVAN 7.5 TOPO MAPS**



